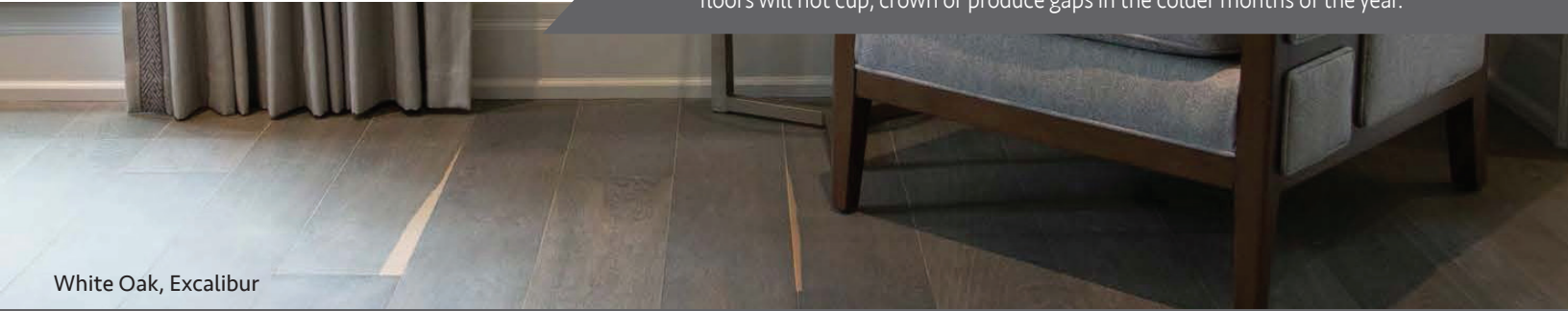


Vintage's revolutionary Solid Sawn® Hardwood floors offer both stability and beauty in a variety of species and a wide selection of distinctive colors and widths. Provided that a relative humidity level of 25-70% is maintained, we guarantee that our Solid Sawn® floors will not cup, crown or produce gaps in the colder months of the year.



White Oak, Excalibur

SMOOTH

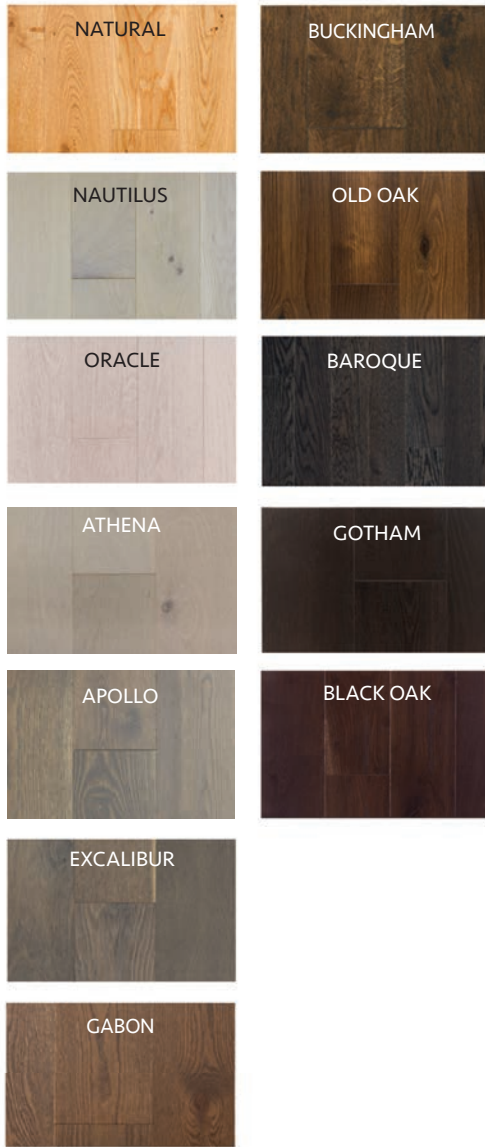
WIRE BRUSHED

HICKORY

WHITE OAK

WHITE OAK

**WHITE OAK
RIFT & QTR SAWN**



Popular for hundreds of years, Hand Scraped hardwood has a distinct sculpted look and old world feel. Not to be confused with machine scraped hardwood that has a repetitious pattern, each board of Vintage's hardwood flooring is scraped and crafted by hand, and then stamped by the craftsmen, making each board unique. Hand Scraped floors tend to be more low maintenance compared to a smooth finish and help hide every day wear. These floors are contoured to accentuate the natural beauty and character of each species.



White Oak, Gotham

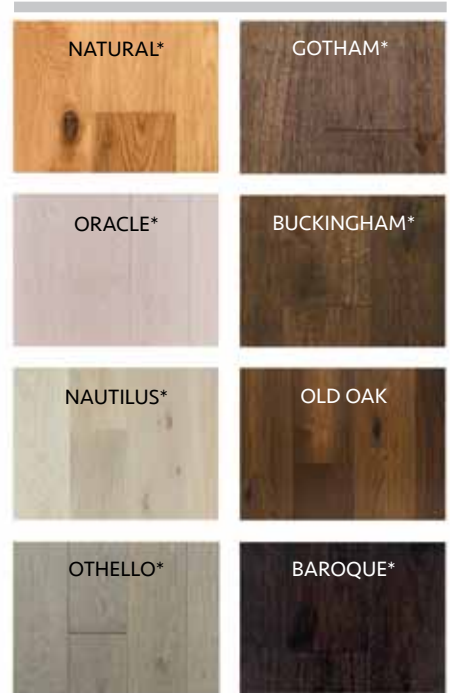
HICKORY



MAPLE



WHITE OAK



BLACK WALNUT



*Herringbone: These species and colors are available in Herringbone. Refer to the Herringbone specification sheet for more information.

HAND SCRAPED SPECIFICATIONS



Product Type:

Structured Solid Sawn® - Authentic Hand Scraped

Product Species:

Black Walnut, Hickory, Maple, White Oak

Product Grade & Width:

Black Walnut Character: 4 1/4" (108 mm), 5" (127 mm), 7" (177 mm)
 Hickory Character: 5" (127 mm), 7" (177 mm)
 Maple Character: 5" (127 mm)
 White Oak Character: 3 1/4" (83 mm), 5" (127 mm), 7" (177 mm), 10" (254 mm)
 Herringbone Character: 5" (127 mm) x 30" (762 mm)

Availability of widths will vary by grade and color. Refer to availability chart for more information.

Product Lengths:

Character: 16" - 87" Average 48" (406 mm - 2209 mm Ave. 1219 mm)
 Character: 10" White Oak 24" - 115" Average 58" (254 mm - 609 mm - 2921 mm Ave. 1219 mm)

Product Gloss:

Pearl (low gloss), Semi gloss and UV Oil by special order

Product Grade:

Character with filled voids

Product Construction:

3/4" (19mm) 3 ply, Solid Sawn

Face Lamella:

4mm

Core Layer:

10mm Solid Finger construction of same species or alike species

Back Layer:

5mm Solid Sawn construction of same species or alike species

Installation Method:

Nail, Glue or Float
 Herringbone: Glue

Radiant Heat:

Contact a Vintage dealer for approved species over radiant heat

Structural Warranty:

Lifetime Structural Warranty

Lifetime Stability Warranty:

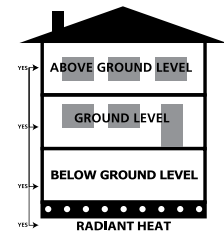
Relative humidity must be maintained between 25% - 70%

Residential Warranty:

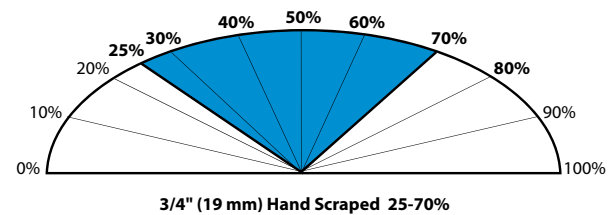
25-Year Wear Warranty for Pearl and Semi-gloss
 10-Year Wear Warranty for UV Urethane Oil

Commercial Warranty:

3-Year Wear Warranty for Pearl and Semi-gloss
 1-Year Wear Warranty for UV Urethane Oil



*Not all species are warranted over radiant heat. Consult your dealer for further information.





SOLID SAWN® SPECIFICATIONS

Product Type:

Structured Solid Sawn®

Product Species:

Hickory, White Oak

Product Grade & Widths:

Availability of widths will vary by grade and color. Refer to availability chart for more information.

Hickory: Select-V 3 1/4" & 4", Character 5" & 7"

White Oak 5", 7"

Rift & Qtr. Sawn White Oak: 5", 7"

Product Lengths:

Hickory Select-V: 18" – 71" Average 38"

Hickory, White Oak Character: 18" – 84" Average 44"

Product Gloss:

Pearl is Standard on Character grade Hickory & White Oak. UV

Oil is Standard on some White Oak. Refer to Availability chart.

Available by special order on all other products and species.

Hickory Select-V is offered in Semi gloss and Pearl.

Product Grade:

Availability of grades will vary by species and widths. Refer to availability chart for more information.

Select-V – Color variation and naturally occurring characteristics

Estate – Best grade available

Character – Naturally occurring characteristics, sound knots and checking

Product Construction:

3/4" (19mm) 3 Ply Structured

Face Lamella:

4mm

Core Layer:

10mm Solid Finger Core – Similar or alike species

Back Layer:

5mm Solid Finger Core – Similar or alike species

Installation Method:

Nail onto plywood, Glue or Float on concrete on, at or below grade

Radiant Heat:

Contact a Vintage dealer for approved species over radiant heat

Structural Warranty:

Lifetime

Lifetime Stability Warranty:

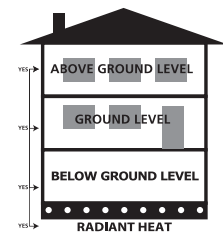
Relative humidity must be maintained between 25% – 70%

Residential Warranty:

25-year Wear Warranty – Pearl and Semi-gloss
10-year – UV Urethane Oil

Commercial Warranty:

3-Year Limited Warranty – Pearl and Semi-gloss
1-Year Limited Warranty – UV Urethane Oil



*Not all species are warranted over radiant heat. Consult your dealer for further information.

