

# BLADE SPECIFICATIONS

**Product Type:**

3/4" (19mm) Pioneered® solid  
3/4" (19mm) Northern Solid Sawn® Structured  
Tongue and groove

**Product Species:**

Oak

**Product Gloss:**

UVF

**Product Lengths:**

**Pioneered® solid Character: 4 1/4"**  
12" - 79' Average 32" (305 mm - 2007 mm Ave 813 mm)  
**Northern Solid Sawn® Character: 5", 6 1/2"**  
20" - 82" Average 42" (511 mm - 2086 mm Ave 1067 mm)

**Product Grade & Width:**

**Oak: Pioneered® Character 4 1/4"**  
**Northern Solid Sawn® Character 5", 6 1/2"**

**Character:** Unlimited color variation and naturally occurring characteristics, sound filled knots (no limitation of knot size), checks and splits. Some voids are allowed.

**Sanding:**

Can be professionally sanded 3-4 times

**Radiant Heat:**

**Pioneered®:** Not approved over Radiant heat  
**Northern Solid Sawn®:** Approved over Radiant heat

**Installation Method:**

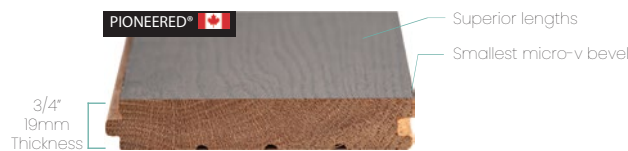
**Pioneered® solid:** Nail down on plywood at or above ground level  
**Northern Solid Sawn®:** Nail, glue or float at, above or below grade

**Subfloor:**

**Pioneered® solid:** Plywood  
**Northern Solid Sawn®:** Plywood or concrete



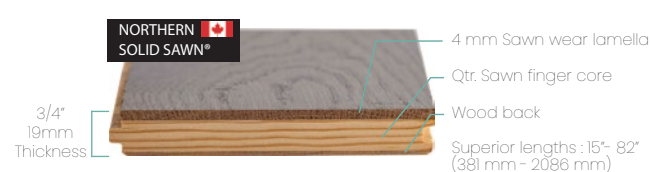
Oak Character Barista UVF



Relative Humidity Chart



Installation methods



Relative Humidity Chart



Installation methods



Floated installation relative humidity warranty is 30 - 60%

Consult Vintage's Radiant Heat compliance information at [vintageflooring.com](http://vintageflooring.com)

**LIFETIME**  
stability warranty

**LIFETIME**  
structural warranty

**35 YEARS**  
residential wear warranty

**3 YEARS**  
commercial wear warranty