

SCULPTED SPECIFICATIONS

Product Type:

3/4" (19mm) Pioneered® solid
 3/4" (19mm) Northern Solid Sawn® Structured
 3/4" (19mm) Northern Solid Sawn® Structured Herringbone
 Tongue and groove

Product Species:

Black Walnut, Hickory, Maple, Red Oak, White Oak

Product Gloss:

UVF

Product Lengths:

Pioneered® solid Character: 4 1/4"
 12" - 79" Average 32" (305 mm - 2007 mm Ave 813 mm)
Northern Solid Sawn® Character: 5", 6 1/2", 7 3/4"
 20" - 82" Average 42" (511 mm - 2086 mm Ave 1067 mm)

Product Grade & Width:

Black Walnut: Northern Solid Sawn® Character 5", 6 1/2"
Hickory: Northern Solid Sawn® Character 5", 6 1/2"
Maple: Northern Solid Sawn® Character 5", 6 1/2"
Red Oak: Pioneered® solid Character 4 1/4"
White Oak: Northern Solid Sawn® Character 5", 6 1/2", 7 3/4"
 Herringbone Character 5" x 30"

Character: Unlimited color variation and naturally occurring characteristics, sound filled knots (no limitation of knot size), checks and splits. Some voids are allowed.

Sanding:

Can be professionally sanded 3-4 times

Radiant Heat:

Pioneered®: Not approved over Radiant heat
 Northern Solid Sawn®: All species are approved over Radiant heat except Hickory

Installation Method:

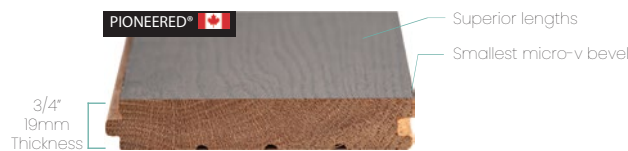
Pioneered® solid: Nail down on plywood at or above ground level
 Northern Solid Sawn® Plank: Nail, glue or float at, above or below grade
 Herringbone: Glue

Subfloor:

Pioneered® solid: Plywood
 Northern Solid Sawn®: Plywood or concrete



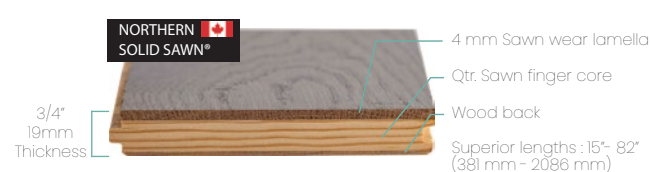
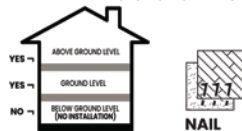
Black Walnut Character Natural UVF



Relative Humidity Chart



Installation methods



Relative Humidity Chart



Installation methods



Floated installation relative humidity warranty is 30 - 60%

Consult Vintage's Radiant Heat compliance information at vintageflooring.com

LIFETIME
stability warranty

LIFETIME
structural warranty

35 YEARS
residential wear warranty

3 YEARS
commercial wear warranty