

# HAND SCRAPED SPECIFICATIONS

**Product Type:**

3/4" (19mm) Solid Sawn® 3 layer Structured Tongue and groove with bevel on 4 sides

**Product Species:**

White Oak Plain Sawn

**Product Textures & Gloss:**

**Hand Scraped:** Pearl

**Product Lengths:**

**5" & 7" Character:** 16" - 84" Average 44" (406 mm - 2134 mm Ave 1118 mm)  
**10" Character:** 24" - 114" Average 58" (610 mm - 2896 mm Ave 1476 mm)

**Product Grade & Width:**

**White Oak Plain Sawn:** Character 5", 7", 10"  
 See availability chart for more information

**Character:** Unlimited color variation and naturally occurring characteristics, sound filled knots (no limitation of knot size), checks and splits. Some voids are allowed.

**Face lamella:**

5/32" (4 mm ) sawn solid hardwood

**Core layer:**

3/8" (10 mm ) solid finger core

**Back layer:**

3/16" (5 mm) solid finger core

**Radiant Heat:**

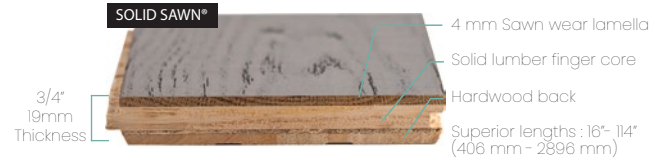
Approved over Radiant heat

**Installation Method:**

Nail, glue or float at, above or below grade

**Subfloor:**

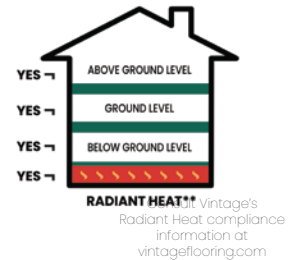
Wood or concrete



Relative Humidity Chart



Installation methods



Hand Scraped White Oak Character Othello Pearl

**LIFETIME**  
 stability warranty

**LIFETIME**  
 structural warranty

**35 YEARS**  
 residential wear warranty

**3 YEARS**  
 commercial wear warranty