

SOLID SAWN® SPECIFICATIONS

Product Type:

3/4" (19mm) Solid Sawn® 3 layer Structured
Tongue and groove with bevel on 4 sides

Product Species:

White Oak Plain Sawn

Product Textures & Gloss:

Smooth: White Oak Pearl & UVF
Wire Brushed: White Oak UVF
Hand Scraped: Pearl

Product Lengths:

5" & 7" Character: 16" - 84" Average 44" (406 mm - 2134 mm Ave 1118 mm)
8" & 10" Character: 24" - 114" Average 58" (610 mm - 2896 mm Ave 1476 mm)

Product Grade & Width:

White Oak Plain Sawn: Character 5", 7", 8", 10"
See availability chart for more information

Character: Unlimited color variation and naturally occurring characteristics, sound filled knots (no limitation of knot size), checks and splits. Some voids are allowed.

Face lamella:

5/32" (4 mm) sawn solid hardwood

Core layer:

3/8" (10 mm) solid finger core

Back layer:

3/16" (5 mm) solid finger core

Sanding:

Can be professionally sanded 3-4 times

Radiant Heat:

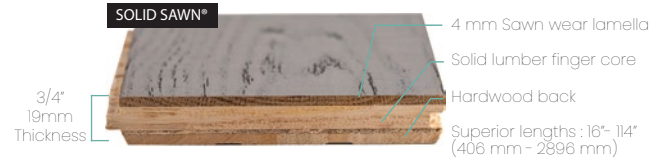
Approved over Radiant heat

Installation Method:

Nail, glue or float at, above or below grade

Subfloor:

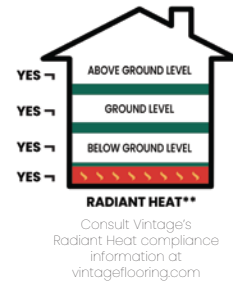
Wood or concrete



Relative Humidity Chart



Installation methods



Hand Scraped White Oak Character Othello Pearl

LIFETIME
stability warranty

LIFETIME
structural warranty

35 YEARS
residential wear warranty

3 YEARS
commercial wear warranty